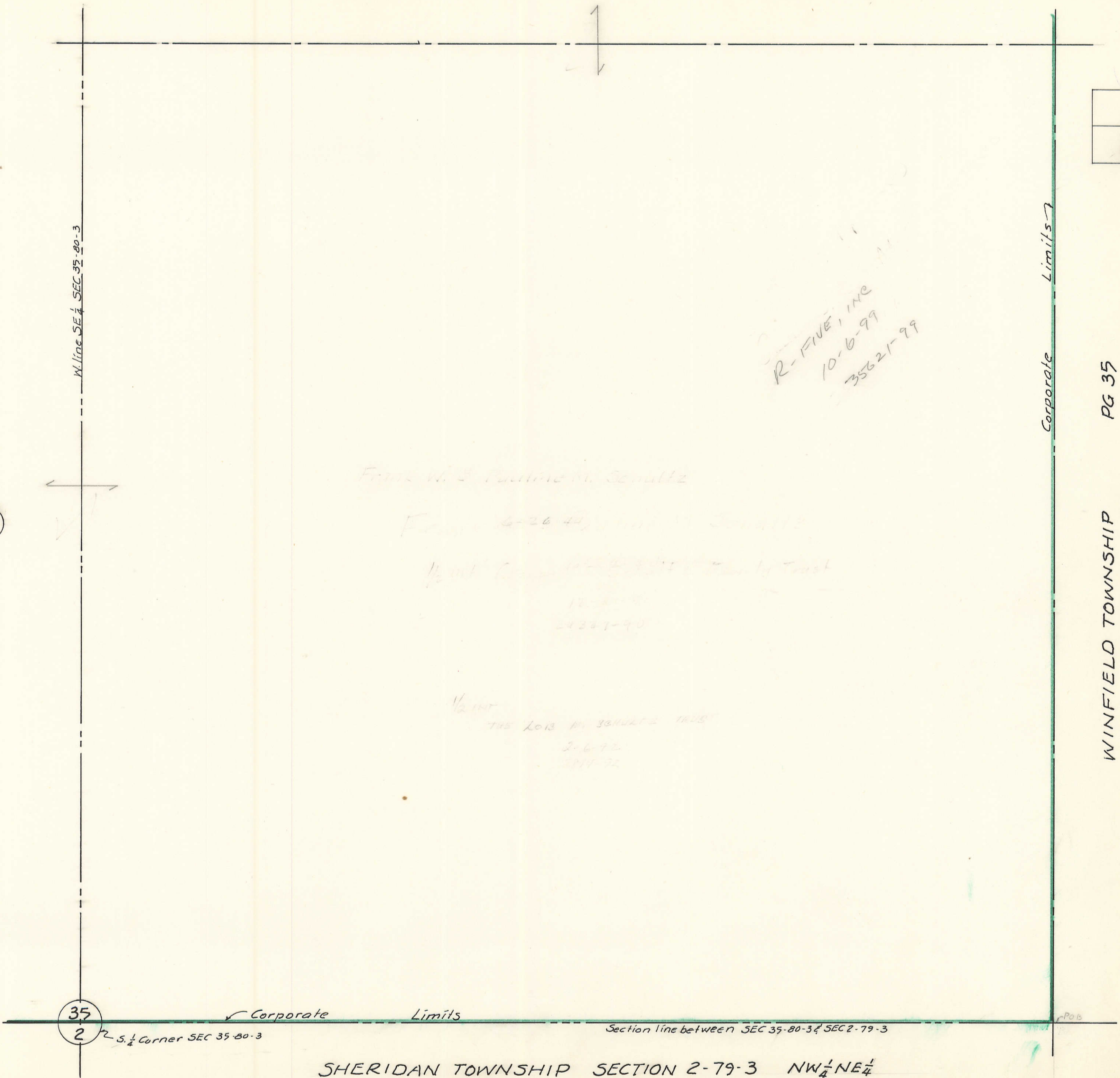


(37)



W. line SE $\frac{1}{4}$  SEC 35-80-3

(51)

*R-FIVE, INC  
10-6-99  
35621-99*

*Frank W. J. ...*

*Frank W. J. ...*

*1/2 ...*

*12-21-90  
24321-90*

*1/2 ...*

*THE LOIS M. SCHULTZ TRUST*

*2-6-92  
2011-92*

(35)  
2

SE $\frac{1}{4}$  Corner SEC 35-80-3

Corporate Limits

Section line between SEC 35-80-3 & SEC 2-79-3

SHERIDAN TOWNSHIP SECTION 2-79-3 NW $\frac{1}{4}$  NE $\frac{1}{4}$

(2)

Corporate Limits

PG 35

WINFIELD TOWNSHIP  
SE $\frac{1}{4}$  SE $\frac{1}{4}$  SEC. 35

